

earth^o safe

Fuel Systems for Critical Power

C2-ATS Pump Controller

Dual Power Fuel Pump Motor Control



C2-ATS

Dual Power Fuel Pump Motor Control

The C2 ATS incorporates a dual power source input with automatic transfer to the alternate power source upon failure of the primary. The dual version of the C2 ATS applies the active power source to both pumps maintaining redundant pump service through the utility outage.

Earthsafe Pump Motor Starters are designed specifically for operation in critical facility environments. The units are applied for Earthsafe duplex pump and filtration systems, and are also used for standard petroleum submersible pumps such as Red Jacket and FE Petro.

C2 PowerPlex are Full Featured Pump Motor Control for Critical Service. Motor starter has (a) code compliant motor protection, (b) a local power disconnect, (c) current sensor or other means of functional feedback, (d) manual start from line power – independent of control power.

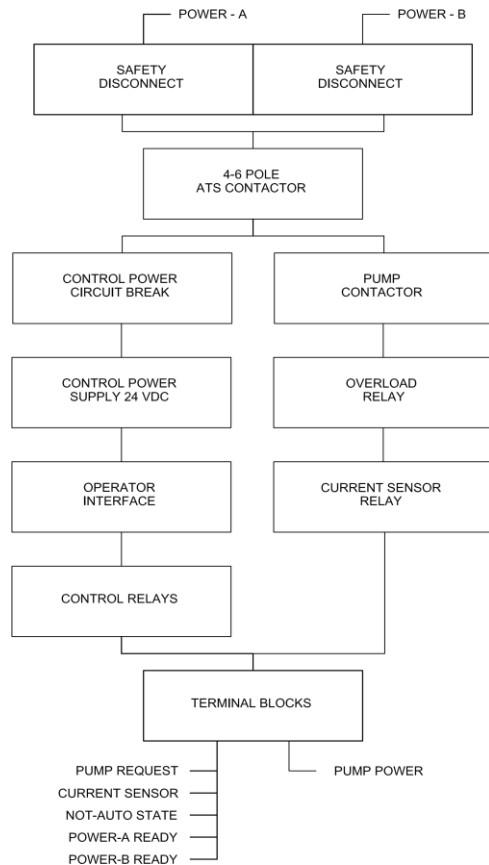


C2-ATS-S Single Pump Controller
C2-ATS-D Duplex Pump Controller

- Operates in Manual (Local) or Auto (Remote) Mode
- In Manual Mode Pump Starts on Line Voltage Alone
- Output Contacts for (a) Not-in-Auto Mode, (b) Current Sensor
- Duplex Model Accepts 2 Independent Power Sources
- Automatic power switch on primary source failure

C2 Pump Motor Starter

Dimensions	Single: 16" H x 12" W x 6" D (400x300x150) Dual: 16" H x 16" W x 6" D (400x400x150)
Approval	UL, CE
Enclosure	NEMA 4 (IP66) Color RAL 7035 (Light Gray)
Environmental	-20 to 131 F (-30 to 55C)
Motor Protection	Motor Starter with Electronic Overload Relay Lockable Disconnect Switch H-O-A Switch
Output Relays	Not-In-Auto Signal Current Sensor Active Power A Available Power B Available
Other	Remote Start Input
Options	50 Hz Power CE Approval External H-O-A Switch Power On Light Pump Run Light



Order Information

Ordering Part	Description
ATS (D).11.XX	120 VAC, 50-60 HZ, 1 PH, XX=HP (KW)
ATS (D).21.XX	230 VAC, 50-60 HZ, 1 PH, XX=HP (KW)
ATS (D).23.XX	230 VAC, 50-60 HZ, 3 PH, XX=HP (KW)
ATS (D).43.XX	480 VAC, 50-60 HZ, 3 PH, XX=HP (KW)